

kessler
licht
technik

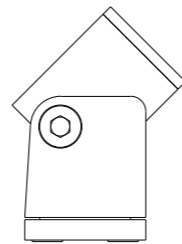
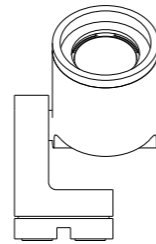
dot .



kessler **pure**
light.

dot .

With the dot series, *KESSLER* offers a miniature track-mounted spotlight which meets the requirements of demanding lighting situations in the display case and on the object. The minimalist design language creates a family of luminaires that discreetly fades into the background without influencing the observer. Flexibility is the strength of this series. The staging of exhibits can be refined with various lens inserts and spotlight attachments.

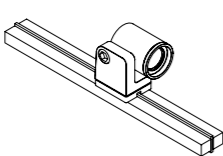


scale 1:1

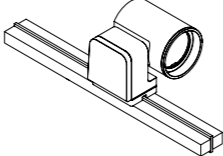
dot10 .LNK, black



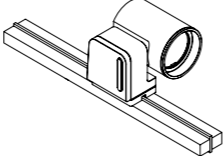
dot10 .LNK



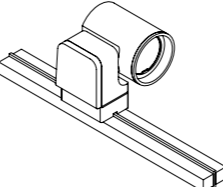
dot16 .LNK .SD



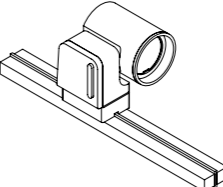
dot16 .LNK+ .SD



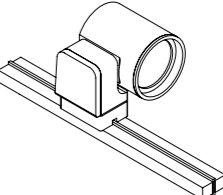
dot16 .LNK



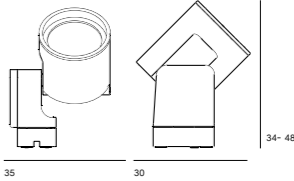
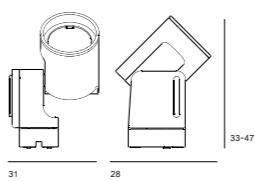
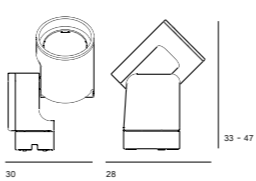
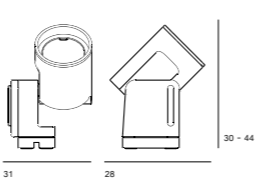
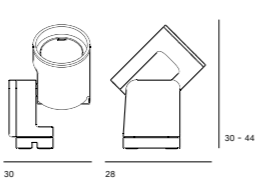
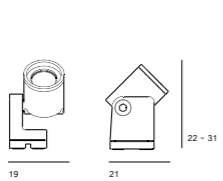
dot16 .LNK+



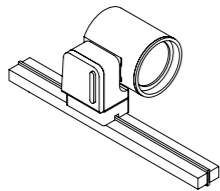
dot20 .LNK



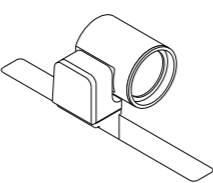
luminous flux	50lm	100lm	100lm	100lm	100lm	150lm
light color	2700K - 6500K	2700K - 6500K	2700K - 6500K	2700K - 6500K	2700K - 6500K	2700K - 6500K
CRI Ra typ., R9+R12	97, >90	97, >90	97, >90	97, >90	97, >90	97, >90
TM-30-15 Rg, Rf	>100, >90	>100, >90	>100, >90	>100, >90	>100, >90	>100, >90
color deviation	±100K	±100K	±100K	±100K	±100K	±100K
beam angle	18°, 26°,30°	10°, 16°, 23°, 30°	10°, 16°, 23°, 30°	10°, 16°, 23°, 30°	10°, 16°, 23°, 30°	10°, 13°, 18°, 36°, 46°x10°
power, voltage	1W, 12V	2W, 12V	2W, 12V	2W, 12V	2W, 12V	3W, 12V
dimming	external	external	local	external	local	external
spot attachments	anti glare tube	anti glare tube spot snoot honeycomb grid	anti glare tube spot snoot honeycomb grid	anti glare tube spot snoot honeycomb grid	anti glare tube spot snoot honeycomb grid	anti glare tube spot snoot honeycomb grid



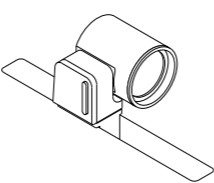
dot20 .LNK+



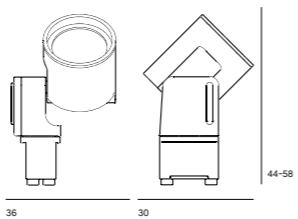
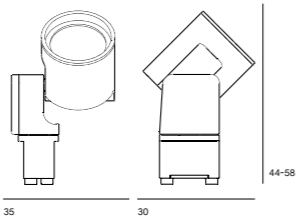
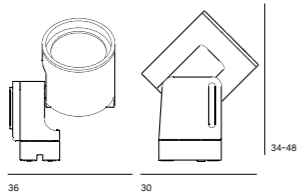
dot20 .SLT



dot20 .SLT+



luminous flux	150lm	150lm	150lm
light color	2700K - 6500K	2700K - 6500K	2700K - 6500K
CRI Ra typ., R9+R12	97, >90	97, >90	97, >90
TM-30-15 Rg, Rf	>100, >90	>100, >90	>100, >90
color deviation	±100K	±100K	±100K
beam angle	10°, 13°, 18°, 36°, 46°x10°	10°, 13°, 18°, 36°, 46°x10°	10°, 13°, 18°, 36°, 46°x10°
power, voltage	3W, 12V	3W, 12V	3W, 12V
dimming	local	external	local
spot attachments	anti glare tube spot snoot honeycomb grid	anti glare tube spot snoot honeycomb grid	anti glare tube spot snoot honeycomb grid



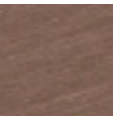
housing color



anodized black matt



anodized silver matt



anodized bronze

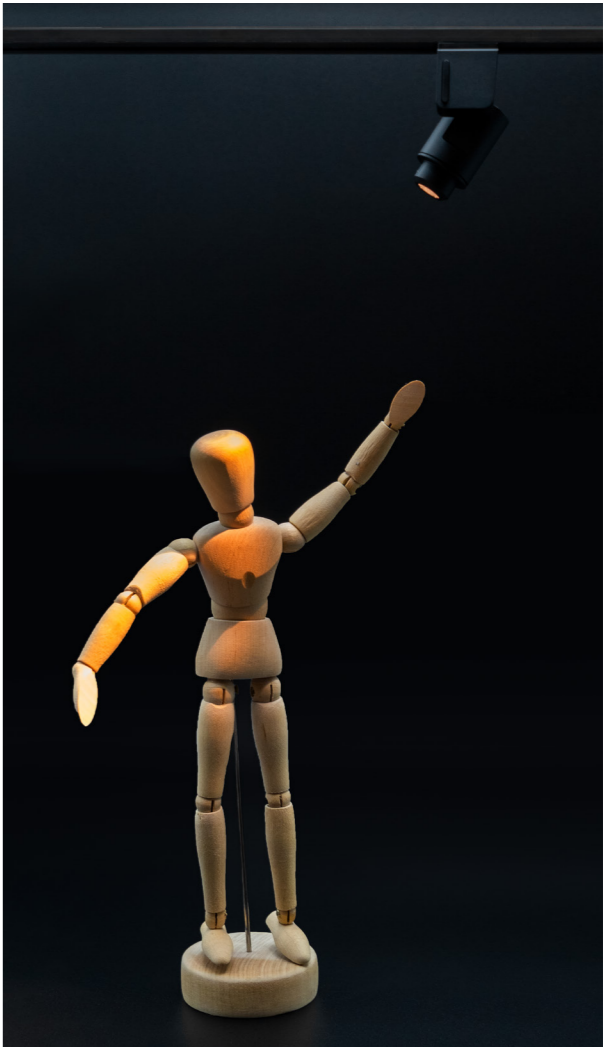


anodized champagne



painted RAL color

dot16 .LNK+ .SD, black equipped with spot snoot

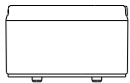




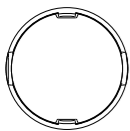
low voltage magnetic track

Our low voltage magnetic track *RAIL115* is both functional and aesthetic simultaneously. It can be mounted on the surface or flush with the surface in a groove by using simple mounting brackets. Even more elegant is the installation in combination with our *SLOT* profiles.

rail115, chrome and deep black



dot16 .LNK .SD, black equipped with anti-glare tube
LTR: spot snoot, honeycomb grid, spot cap



flexibility

All spotlights in the dot series can be fitted with various attachments simply and without tools in order to refine the lighting presentation. It is also possible to replace the lenses afterwards.





aesthetic design

The spotlights of the *DOT* series are reduced to a minimum in their design and this without any loss of functionality. In combination with the high light quality and premium materials, they integrate perfectly into their environment.

dot10 .LNK, silver

*dot16 lighting system at
Neues Museum Weimar,
Germany*





sustainability

Sustainability is a high priority at KESSLER. Even at the design stage, it is essential that the spotlights are further repairable. The small size and the modular construction contribute to saving resources. Durable, high quality materials are also used, which guarantees a long product lifetime. The spotlights are low-maintenance and have minimal power consumption.

Suppliers are based regionally at the company's location on Lake Constance, Germany.

dot16 .LNK .SD, silver

kessler **pure** **light.**

by

kessler licht technik GmbH
Lerchenweg 11-15
88376 Königseggwald
Germany

+49 7587 95032 0
info@klt-licht.com
www.klt-licht.com



reddot award 2018
winner



cover design and support by StephanPartner